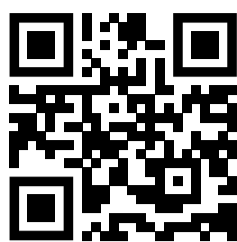


INSTALLATION INSTRUCTIONS.

For single and double door-sets.



STRONGDOR

Any problems?

Step 1: Scan QR to watch our install videos

Step 2: Call us - (630) 474 4677

Visit us at www.strongdor-usa.com



IMPORTANT.

Strongdor manufactures high-quality, custom-made American steel doors but is not responsible for installation. Our warranty and any certifications related to our products are only valid if the doors are installed correctly using all specified installation components and recommended tools.

According to our Terms and Conditions of Sale, Strongdor is not liable for any product quality issues caused by improper installation, and failure to follow correct installation procedures will void the warranty and the manufacturer's guarantee.

To support our customers, we provide general installation and maintenance instructions. However, installation methods may vary by location, and the guidance in this document should not be considered professional advice. We strongly recommend that only experienced and qualified professionals install our products.

For full legal terms regarding our product sales, please refer to our **Terms and Conditions of Sale** or contact us for more information.

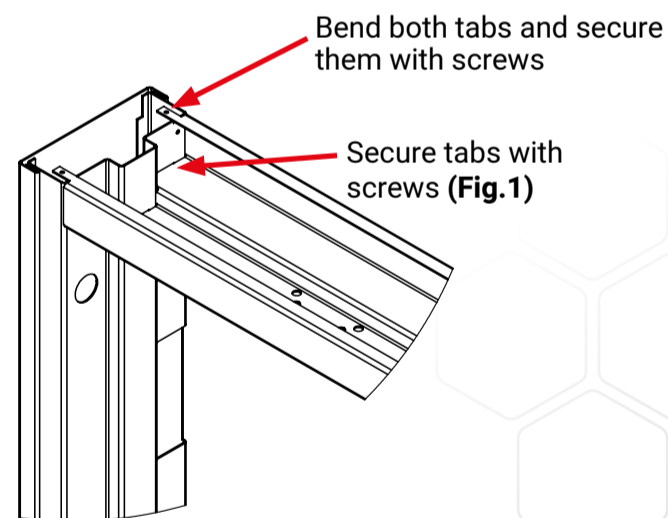
Pre-Installation.



GENERAL SAFETY

- Do not install the door-sets until you have read and fully understood the instructions in this guide and set up the workspace according to the provided information.
- Strongdor doors are designed for professional installation only, and it is recommended that at least two people handle the installation. Make sure the installers are trained, qualified professionals.
- Your organization should conduct its own risk assessments and follow proper safety procedures. Failure to follow all instructions could result in serious injury.

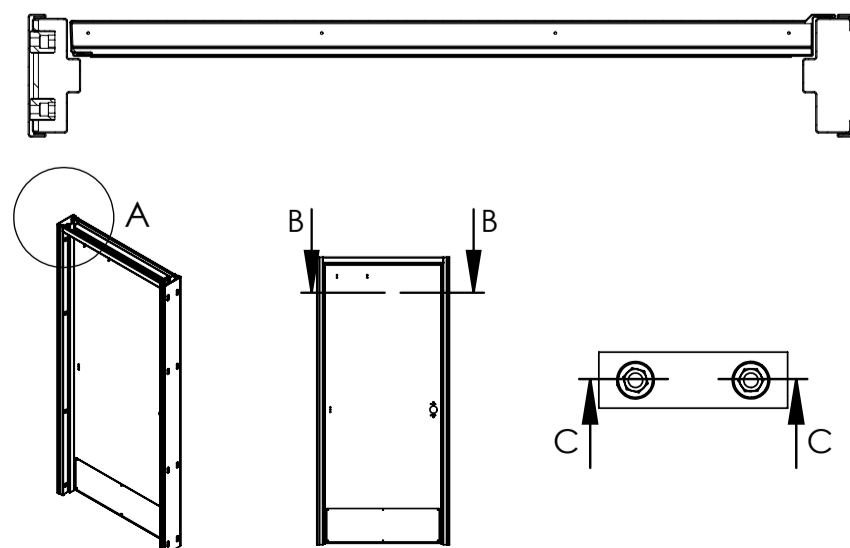
FRAME & EXPANDER SIDE



Installation.

- Check that the packaging and its contents are undamaged. Any shipping damage must be reported before installation and within 24 hours of delivery.
- Make sure all packaging is intact and that all items listed on the Bill of Lading are included.
- Clear the area of any obstructions before laying any items on the ground to prevent damage or scratches.
- Confirm it is safe to drill around the opening—watch out for electrical wires, gas lines, and other hazards.
- Verify that the dimensions on the white label match the opening where you plan to install the door.
- Find your keys inside the installation kit box.

FRAME FIXING DETAILS



STEP 1 ASSEMBLE FRAME & THRESHOLD

- For unassembled frames, place the frame components on a flat surface and attach the header to the jambs at the corners using the provided tabs and tek screws (Fig.1).
- If no threshold is needed, skip to Step 2.
- Using locking pliers, hold the threshold in place on both sides at the bottom of the frame. Make sure the frame width at the bottom matches the width at the top—this ensures the door fits properly.
- Once the threshold is perfectly aligned, secure it to the base of the frame using the provided self-drilling screws or rivets.

STEP 2 DOOR FRAME INSTALLATION

- For a single door, start by removing the door leaf from the frame.
- The door set includes expander sides that can adjust up to **1/2" per side**, allowing for variations up to **1" total**. The expander side fits over the frame jamb.
- Place the frame into the opening and use the **hex key (Allen Key)** from your install kit to adjust the expander bolts until the frame holds itself square within the opening.
- Tighten the expander bolts just enough to keep the frame in place—**do not over-tighten**.

- Use a **level** to check that the hinge jamb is properly aligned. For a **single door**, make sure the hinge jamb is plumb and adjust as needed. For a **double door**, this step applies only to the **passive hinge jamb**. When installing a double door, it is best to secure the passive hinge jamb first while leaving the active door leaf loose.
- Once the frame is in position, start at the hinge jamb and drill through the **expander bolts** into the surrounding structure. Be careful not to damage the bolts.
- At this stage, we recommend securing only the **top expander bolt** on the rebate side of the hinge jamb.
- Recheck with a level to ensure the jamb is still plumb, then install the second fastener at the **bottom rebate side** of the hinge jamb.

STEP 3: SINGLE DOOR

INSTALLING THE DOOR TO THE FRAME

- Now that the hinge side is secured in place, you can re-hang the door to the frame.
- Close the door against the strike jamb. If needed, adjust the strike jamb to ensure the astragal is parallel to and touching the strike jamb. (For guidance, scan the QR code on the first page to watch our installation videos.)
- Check the clearance between the frame and the leaf is approximately 3mm. If needed, you can adjust this clearance by adjusting the expander bolts using the hex bar.
- With the door closed, install one fastener at the top of the strike jamb. Ensure the door leaf remains plumb after securing it, then add additional fixings at the bottom of the strike jamb. Since steel can shift slightly, some additional adjustments may be needed.
- Check that all door hardware operates correctly, taking care not to damage any components.
- Finally, drill through the remaining expander bolts and secure them with fasteners.



DOUBLE DOOR

- Now that the **passive hinge side** is secured in place, you can attach the **passive leaf** to the frame.
- Close the passive leaf and adjust the **opposite jamb** to ensure the door closes properly and remains **parallel** to the header and threshold.
- With the **passive leaf closed**, install **one fastener at the top of the active leaf jamb** on the rebate side.
- Next, attach the **active leaf** and close it. If needed, adjust the **bottom of the active leaf jamb** to ensure both **astragals are touching from top to bottom**, allowing for a **1/8" tolerance**.
- Check that the clearance between the **active and passive leaf** is no more than **1/8"**. If necessary, use the **hex key (Allen Key)** to adjust the **expander bolts** to achieve the correct clearance. **Some additional adjustments may be needed due to the nature of steel.**
- Finally, drill through the **remaining expander bolts** and secure them with a fastener.

STEP 4

FINAL CHECK

- Make sure the door opens and closes smoothly.
- Attach the provided gasket (if not pre-installed), following the instructions included carefully.
- Re-check that the door operates properly without binding and adjust the adjuster bolts if necessary.

TOUCH UP PAINT.

Strongdor supplies a paint touch-up system as part of the standard install kit. You can use it to cover paintwork scratches and chips, or for sealing the edges of a trimmed side expander frame as the powder supplied is an exact colour match to the door.

1.



Remove the small powder coating pot from the top of the touch-up stick. Your colored powder paint is concealed within the cap.

2.



Open the touch-up pot fully to help add the powder.

3.



Shake well.

4.



Apply as required.

UNSURE ON HOW TO INSTALL OUR STEEL DOORS?

SCAN QR TO WATCH OUR INSTALL VIDEOS

Call us - (630) 474 4677
www.strongdor-usa.com

